

## What are some factors to consider when choosing between SSCs, Zirconia, Resin?

### COST / INSURANCE COVERAGE

These three different crown choices have different costs. Generally speaking, the least to most expensive material choice is: SSC < Resin < Zirconia

Not only are the overall costs different between the three materials, we have found **many** insurance companies limit reimbursement of Resin and Zirconia crowns and “downgrade” their reimbursement to the amount of a SSC instead. Because of this, the cost difference falls upon the caregiver. For some in-network insurances, resin crowns are an “uncovered benefit” and do not allow us to pass the uncovered costs to the patient. At your request, our office will send in a “pre-treatment estimate” and inform you of any expenses not covered by insurance.

### TOOTH SIZE AND SHAPE

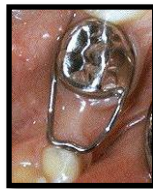
Once in a while, depending on size/shape of tooth, we have no other choice than to use a SSC. Resin crowns can *slightly* bend and adjust, while SSCs can be *significantly* altered to fit all shapes and sizes of teeth. Additionally, “side by side” crowns can be challenging to place, requiring the need for one or more SSCs.

### PATIENT BEHAVIOR

One of the biggest factors affecting material choice is a child’s cooperation level. Zirconia and Resin take more time to place and require the use of local anesthetic. If behavior is at all a concern, it is often best to use a SSC to limit chair time and improve a patient’s overall dental experience.

### OTHER TREATMENT NEEDS

If a child has a neighboring tooth extracted, we often need to place a space maintainer. A common choice is an “all-in-one” spacer, which is already attached to an SSC.



### SUPPLY & DEMAND

There is currently a limited quantity of resin crowns available for purchase.

## What do you offer at Northeast Iowa Pediatric Dentistry?

We understand the importance of wanting an esthetically pleasing dental material for your child. We also want to balance that desire with providing high quality treatment and material choices to create a safe and positive experience.

### ANTERIOR TEETH

Given the superior esthetics of Zirconia crowns, all primary *anterior* (front) teeth needing crowns, are restored with Zirconia crowns. Because of the difficult nature of placing these, this treatment option is **only** available under general anesthesia or IV sedation.

### POSTERIOR TEETH

We offer both stainless steel crowns AND resin crowns on primary *posterior* (back) teeth. We will always offer stainless steel crowns for posterior teeth as they have stood the test of time with regard to success rate, reliability, and strength. Resin crowns offer a much-improved esthetic result, while still allowing for flexibility and ease in placement.

Our team works hard to review the risks, benefits and alternatives of the different dental materials offered. It is our goal that you are confident and content with the dental care you have chosen for your child.

---

**Thank you for choosing Northeast Iowa Pediatric Dentistry for your child’s dental care. We look forward to helping you and your child develop healthy dental habits that will last a lifetime!**



Dr. Annalee Fencil  
Diplomate, American Board of  
Pediatric Dentistry



---

## CROWN OPTIONS for PRIMARY TEETH

---

T: 563.382.6259

F: 563.538.0100

806 Commerce Drive | Suite B  
Decorah, IA 52101

frontdesk@neiapd.com

info@neiapd.com

www.neiapd.com

We receive many questions in pediatric dentistry regarding why crowns are recommended for baby teeth. Most parents understand the concept of a dental crown, as they are often suggested for adult teeth. Children may also need crowns depending on their dental needs.

While fillings are commonly used on teeth with small, isolated decay, crowns are often recommended for a variety of reasons: a child's age, size and location of decay, brushing/diet habits, and cooperation level.

### What is a crown?

A crown is essentially a strong cap used by dental professionals to repair and reinforce a tooth – think of it as similar to a helmet, but for teeth!

### Why are crowns recommended for baby teeth?

It is important to preserve baby teeth as they are essential in the development of children. Baby teeth are important for growth, speech, nutrition and overall health. They also assist with adult teeth erupting in the correct position. The following are just a few reasons your child's dentist may recommend a crown on a baby tooth:

- Large decay resulting in a significant amount of missing tooth structure
- Multi-surface decay
- Teeth requiring pulpal treatment (long term success increases significantly when restored with a crown vs. filling)
- Teeth that have not developed properly (hypomineralized molars)

Crowns are shown to protect and reinforce teeth better than fillings and can prevent dental work from being repeated on the same tooth. Placing a filling on a tooth with minimal remaining healthy tooth structure often results in a fractured tooth and/or filling. One main goal of pediatric dentistry is to "only fix a tooth once." Crowns are a great way to prevent repeat treatment, which saves children from multiple dental trips and results in less expense for the parent.

The most common material choices for crowns in children are stainless steel, zirconia, and resin.

**Let's talk about the difference in these options:**

### STAINLESS STEEL CROWNS (SSCs)

**Stainless steel crowns** have been used in pediatric dentistry for over 60 years. Because of their long history in clinical dentistry, SSCs have been thoroughly researched. Studies show excellent reliability and success, making them our "go to" crown choice for years. They are **silver** in color and are made of nickel, chromium and iron. They bend and flex, and can be adjusted to fit a tooth or in areas of space loss/crowding.



-side by side SSCs-

### ZIRCONIA CROWNS

More recently, **Zirconia crowns** have increased in popularity as they are **white** in color and therefore more esthetically pleasing. Research has shown similar strength and durability to SSCs. "Preparing" a tooth for a zirconia crown does require significantly more removal of tooth structure. Additionally, Zirconia crowns do not bend or flex, and are not adjustable. Because of this, they can be more challenging to place, especially on uniquely shaped teeth and in areas of space loss and/or crowding. They are made of zirconium (similar to titanium), which is often used for adult crowns. Because of its properties, it is the superior crown choice for esthetics.



-zirconia crowns-

### RESIN CROWNS

The newest crown choice for primary teeth are **Resin crowns**. Resin crowns are made of a biocompatible, hybrid resin polymer. They are Bis-GMA free and do not contain metal. Zirconia or resin are a great option if children have a known nickel allergy, as we cannot use stainless steel. They are also **white**, but more opaque in color than Zirconia crowns. Because of this, they are best described as "off-white" or a more "bright white." They require much less tooth removal than their zirconia counterparts, but slightly more than SSCs.



-side by side resin crowns-



-single tooth resin crown-

Additionally, the properties of the hybrid resin allow for flexibility and slight modifications to the crown itself. It truly is the first "flexible white crown" available for baby teeth. While research shows robust wear resistance, equal to that of SSCs and Zirconia, resin crowns are a relatively new product. Time will tell how they hold up to the 'tried and true' stainless steel crowns and the esthetics of the zirconia crowns.



-SSCs (upper)-  
-resin crowns (lower)-



Zirconia Resin SSC