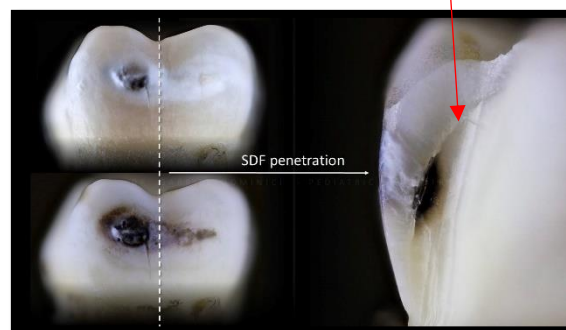


Silver Diamine fluoride (SDF):

A fact sheet

1. What is Silver Diamine Fluoride (SDF)?
 - SDF is a blue liquid that contains silver particles and fluoride.
 - The FDA has approved SDF for use as a desensitizing agent in dentistry, however randomized clinical trials have shown that SDF arrests/stops dental cavities at a high rate.
2. Areas for use:
 - Desensitizing agent for sensitive teeth (ex. hypomineralized teeth).
 - Tooth decay arrestment for young, fearful, or preoperative children, as well as those with special health care needs.
3. When NOT to use:
 - Teeth with evidence of decay reaching the pulp/nerve or teeth that are abscessed.
 - Individuals with a silver allergy.
4. Other considerations:
 - SDF works best on small cavities, NOT medium-large cavities.
 - SDF permanently stains cavities black.
 - A white filling can occasionally be placed “over” the SDF staining to help improve esthetics and restore form and function to those teeth that have large holes that still trap food (see “SMART” technique).
 - SDF requires repeat application for maximum efficacy (2-3 applications usually).
 - SDF will only stop/“pause” decay progression. **Proper diet and oral hygiene, including daily flossing, are critical for long term success.**

DEJ:
Dentin-Enamel Junction



SDF TREATMENT

Silver Diamine Fluoride (SDF) is a non-invasive treatment option for cavities, using a topical medicine that is painted on the tooth instead of a more invasive surgical (drill and fill) approach

SDF Treated Incisors

Before



After



SDF Treated Molar

Before



After



- | | |
|------|---|
| Pros | <ul style="list-style-type: none">• Quick, easy, painless• Relieves sensitivity• Remineralizes your natural tooth structure• Prevents biofilm adhesion• Avoid or delay more invasive restorations• Arrests 80% of cavities when applied twice yearly |
| Cons | <ul style="list-style-type: none">• Permanently stains cavities black• Cavities (holes) that trap food may still require a restoration• Not an option for deep cavities• 20% of cavities continue to grow• SDF is a treatment for cavities, not a cure |

* Proper diet and oral hygiene, including daily flossing, are critical for long-term success

Silver Diamine fluoride (SDF): A fact sheet

SDF + Floss Treatment

Silver Diamine Fluoride (SDF) is a topical antimicrobial and remineralizing non-invasive treatment option for interproximal lesions (decay between the teeth)

SDF Application to Interproximal Surfaces with Spongy Floss



Clinical Appearance of SDF Treated Small Interproximal Lesions



Clinical Appearance of SDF Treated Extensive Interproximal Lesions



- Pros**
- Quick, easy, and painless
 - Non-invasive
 - Remineralizes your natural tooth structure
 - Prevents biofilm adhesion
 - Arrests 80% of lesions when applied twice yearly
 - Avoid or delay more invasive restorations

- Cons**
- Permanently stains decay black
 - 20% of lesions fail to arrest with SDF treatment alone
 - Not an option for deep cavities
 - Lesions between molars are the most likely to grow and may require a restoration

* Proper diet and oral hygiene, including daily flossing, are critical for long-term success



SMART Treatment

Silver Modified Atraumatic Restorative Treatment (SMART) is a minimally invasive treatment option for cavities treated by Silver Diamine Fluoride (SDF) using Glass Ionomer Cement (GIC)

SMART Treated Incisors



SMART Treated Molar



- Pros**
- Minimally invasive
 - Aesthetic
 - Durable
 - Biocompatible
- Cons**
- GIC alone may not mask the entire SDF black scar
 - Larger lesions may require a full coverage restoration
 - SMART is a treatment for cavities, not a cure

* Proper diet and oral hygiene, including daily flossing, are critical for long-term success

