

The "Hall" Technique:

Non-traumatic stainless steel crown placement

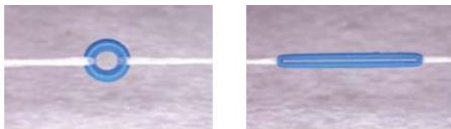


1. What is a stainless steel crown?
 - A stainless-steel crown (SSC) is a chrome-steel cap that fits over primary (baby), and sometimes permanent teeth. It is silver/grey in color.
 - Reasons for use: Larger areas of tooth decay, teeth with multi-surface decay or a tooth defect (ex. hypomineralization)/fracture may require a stainless steel crown for best expected outcome.
2. What is the "typical" way a stainless steel crown is placed?
 - Typically, a local anesthetic is required prior to placement of a stainless steel crown. The decay or fracture is removed and tooth structure is prepared for the crown with a rotary instrument (handpiece). If decay is deep and pulp/nerve treatment is required, this will be performed prior to placement of the crown. The crown is then sized, fitted, and cemented.
3. How is the "**HALL**" technique different?
 - The "HALL" technique describes the procedure for placing a stainless steel crown **without** anesthetic. If decay can be confirmed (with radiographs) to NOT be close to the pulp/nerve of the tooth, the "HALL" technique can be utilized.
 - Reasons for use: decay that does not require pulpal therapy, pre-cooperative children who cannot tolerate anesthesia or longer treatment times.
 - Procedure: REQUIRES 2 APPOINTMENTS, 2-5 DAYS APART
 - In some scenarios, we are able to place an SSC without the first appointment (see below).

The "HALL" Technique for placing stainless steel crown(s)

APPOINTMENT 1: PLACE SEPARATOR(S)

- A "space" must be created prior to fitting the crown. Most often, an orthodontic separator is used to create a small space.



The small space can also be created with rotary instruments. Depending on distance traveled and patient cooperation, we will sometimes use a handpiece to make a very small space between teeth which facilitates the placement of the crown. This is quick and painless, and helps reduce number of appointments.

APPOINTMENT 2 (2-5 days later): FIT & CEMENT STAINLESS STEEL CROWN

- Remove separators, find appropriately sized crown, fill with cement, place, rinse cement, floss.



ADVANTAGES: No local anesthetic required, short/faster placement time, improved patient experience

DISADVANTAGES: Slight disruption in occlusion/bite for 1-2 days